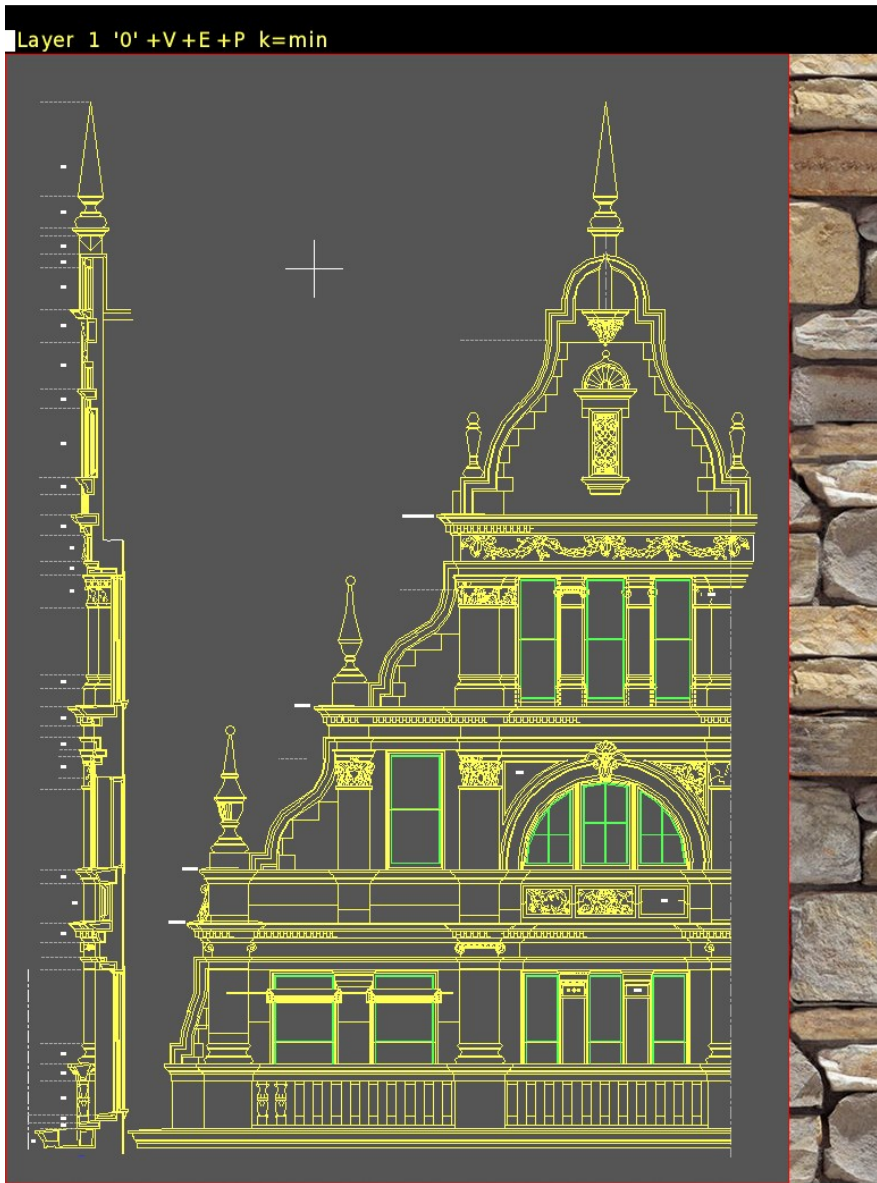


AlfaCAD v 1.9 (“going silver”) for Windows & Linux

C:\Users\Marek\ALFACAD64\Drawings\Water_Street_Elev.alf



In software release life cycle, the term "going silver", also known as release candidate (RC), is a beta version with potential to be a stable product, which is ready to release unless significant bugs emerge.

In this stage of AlfaCAD stabilization, all product features have been designed, coded and tested and it is agreed that no entirely new source code will be added to this release.

Now is great time for beta testing by everyone, not just myself, so to test the software from a user's perspective.

Windows version covers 3 languages (EN, PL, UA), Linux version covers just EN, other languages will follow.

What is new?

Not much comparing with version 1.8 with such difference, that both Windows and newly developed Linux version were unified on source code level, what led to substantial changes in some graphics procedures in Windows version, based on Linux experience.

As a result of these changes, a significant acceleration of graphic operations was achieved, in particular with large multi-blocks graphic structures, while operations on single primitives were insignificantly slowed down, however simplicity and convenience of those were not compromised.

As always, many bugs noticed in the previous version have been fixed.

Enjoy AlfaCAD

author